



RAGHUWANSHI  
PROJECTS

# ARAVINDA

The Epitome of Luxury Living

## ARAVINDA

Raghuwanshi epitomizes “passion at work” in totality. For us it is not only a catchphrase which sounds just right, rather we all strive to live it daily. It serves as our compass which guides us towards creating world-class quality products and workmanship. It drives us to be transparent in all our dealings and adhere to delivery on time.

Our track record of being the most reliable and trustworthy construction company with an experience of more than 14 years.



30'' - 0'' WIDE ROAD

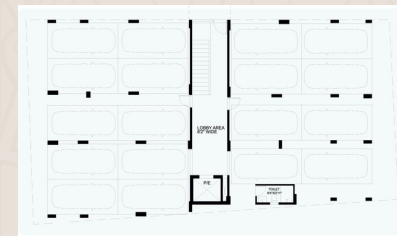


TYPICAL FLOOR PLAN



**GRANDEUR INCOMPARABLE**  
Aravinda ultra-luxury apartment's  
3BHK homes are built in just two  
sizes - 2115 Sft and 2000 Sft.

30'' - 0'' WIDE ROAD



PARKING PLAN

# AMENITIES AND FEATURES



- GYM
- INTERNAL FACILITY
- CCTV SURVEILLANCE
- DESIGNER FALSE COMMON CORRIDORS
- 100% VASTHU
- LANDSCAPE
- GUEST LOBBY IN STILT FLOOR



## STRUCTURES

RCC-Structured frames to withstand seismic loads for Zone -II



## SUPER STRUCTURES

Brick masonry with first class bricks in joining mortar (masonry glue)



## DOORS

**Main Doors:** Engineered and shutter, aesthetically designed with melamine polish along with hardware of reputed make.

**Internal Doors:** Engineered frame and flush door shutter with neat lamination finish along with hardware of reputed make.



## FRENCH DOOR

UPVC glass sliding shutters

## WINDOWS

Three-track UPVC glass sliding shutters with provision for mosquito mesh and elegantly designed MS Painted grills.



## FLOORING

Vitrified tiles in living and dining (80x80) and all bedrooms and kitchen (60x60) of kajaria or equivalent make.

**Toilets:** Good quality vitrified anti-skid tiles of kajaria or equivalent make.



## WATER SOFTENER

Water softening facility for ground water



## PAINTING

**Internal:** Two coats for Birla Putty/Altek Luppam finish over a coat of primer and two coats of paint of reputed make.

**External:** Will as per elevation.



## KITCHEN

Block granite platform with stainless sink. provision for municipal and bore water. Provision for water purifier, dishwasher, and chimney.



## LIFT

One V3F technology lift of Johnson or equivalent make with SS interior of 6 persons capacity.



## TOILETS

A) Bath hot and cold basin mixture of Jaquar or equivalent make in all toilets except powder room.

B) Hot and cold diverter mixer with overhead shower of Jaquar or equivalent make in all toilets except for powder room.

C) Wall-mounted WC with concealed tank of Jaquar or equivalent make.

D) All CP fittings are chrome-plated of reputed make.

E) All Sanitary fittings of reputed make.

F) High quality wash basins in all toilets and in powder room.



## FALSE CEILING

Designer false ceiling will be provided in the corridors only.



## COMMUNICATION SYSTEM

A) Provision for telephone points in drawing, living, and all bedrooms.

B) Intercom facility in all units connected to security.

C) Internet provision in drawing and one bedroom only.



## ELECTRICAL

All flats consist of

A) Concealed copper wiring in conduits for lights, fans, power plugs of reputed make, wherever necessary.

B) Power outlets for geyser, exhaust fans and A/C in living, dining, and all bedrooms.

C) Power plug-points for cooking range, chimney, refrigerator, oven, mixer, etc.

D) Plug-points for TC wherever necessary.

E) All electrical switches are modular or Legrand or equivalent make.

F) Miniature Circuit Breaker (MCB) and RCCB for each distribution board of MDS or equivalent make.



## PLASTERING

**Internal:** 15mm thick double-coat cement plastering with smooth finish.

**External:** 20mm thick double sand-faced coat cement plastering.



## TILES DADOING

**Toilets:** Good quality glazed ceramic tiles up to 7"0" height of reputed make

**Kitchen Platform:** Good quality design glazed ceramic tiles up to 2'0" height of reputed make.

**Utility/Wash Area:** Glazed ceramic tiles up to 4"0" height of reputed make and provision for washing machine.



## AIR CONDITIONER

Provision for split A/Cs in living, dining, and all bedrooms.



## GENERATOR

Power back-up auto-start generator of reputed make DG set, except for A/Cs, in all flats.



# ARAVINDA

The Epitome of Luxury Living

## LOCATION MAP



6-1-298, Padmarao Nagar Road, VP Colony,  
Secunderabad, Hyderabad, TG - 25.

[www.raghuwanshiprojects.com](http://www.raghuwanshiprojects.com)  
Mail: [raghuwanshiprojects@gmail.com](mailto:raghuwanshiprojects@gmail.com)  
Contact: +91 8121001177